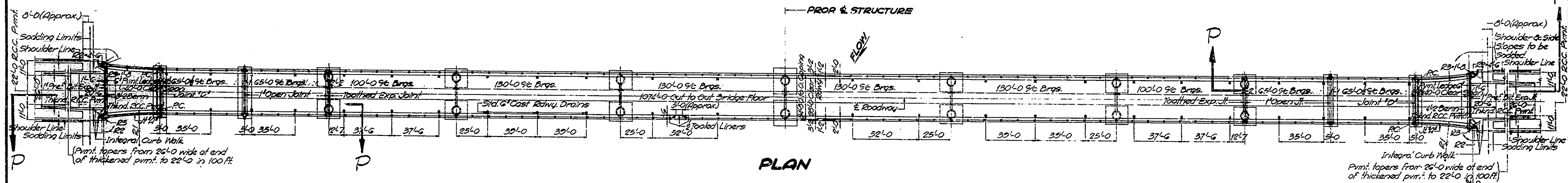
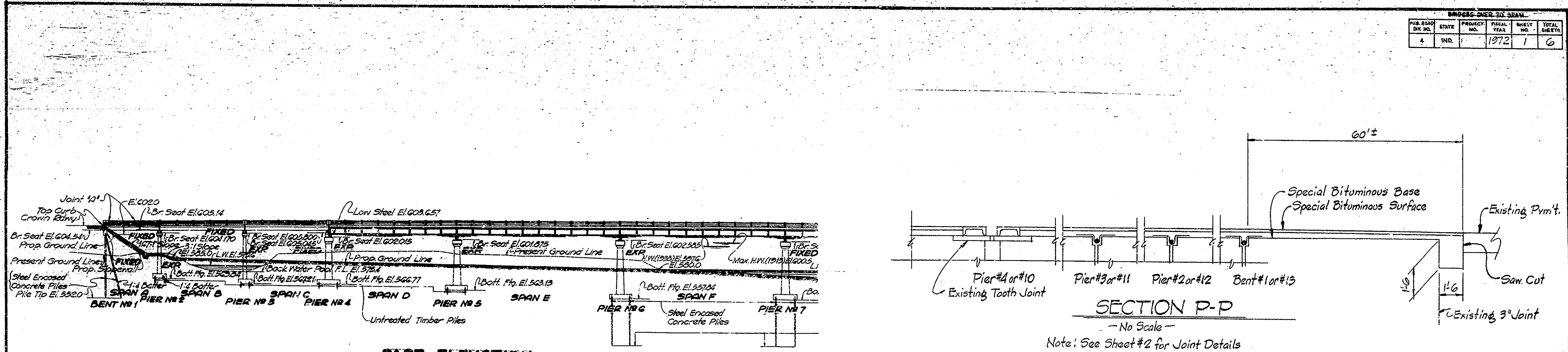
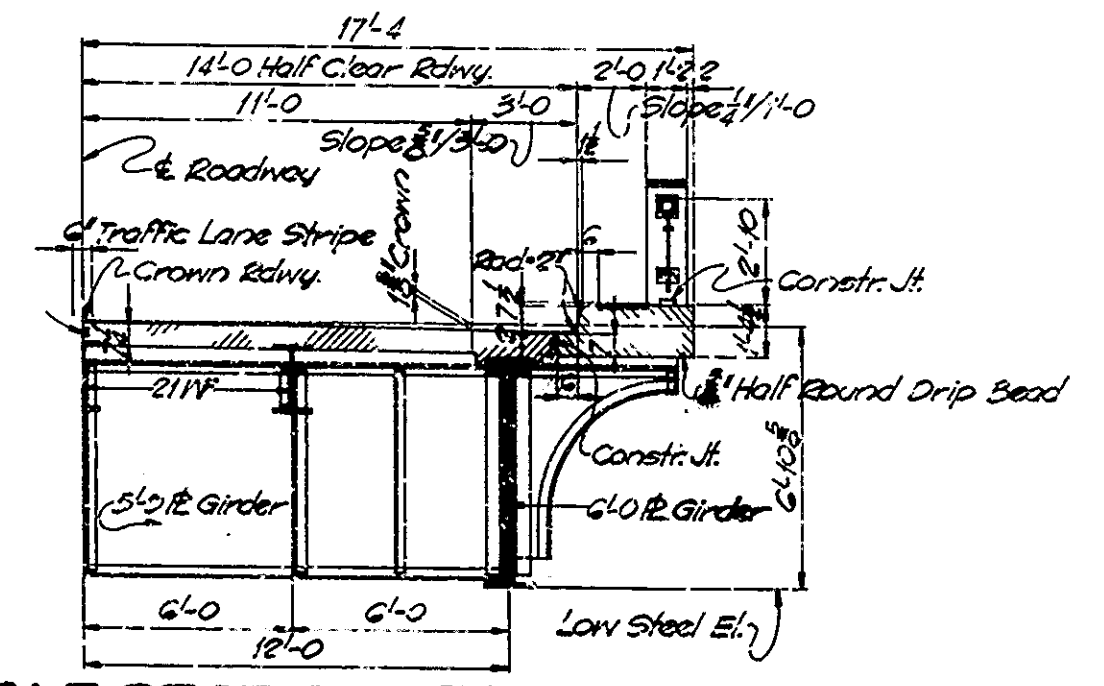


FED. ROAD DIST. NO.	STATE	PROJECT NO.	FISCAL YEAR	SHEET NO.	TOTAL SHEETS
4	IND.		1972	1	6



INDEX				
Sheet No.	Sheet Designation	Structure	Type	Cont. No.
39-55-3108A		Cont. Plate Girder, 5 1/2' Bm.	40', 2@65', 100'	White Fork R.C. Girder 2@65', 40'
1	D1	Title Sheet & General Plan, Reconstruction & Overlay		
2	D2	Details and Summary		
3	Det. Sheet 1	Detour Signs		
4	Det. Sheet 2	Barricades		
5	Det. Sheet 3	Detour Signs		
6	Det. Sheet 4	Detour Signs		

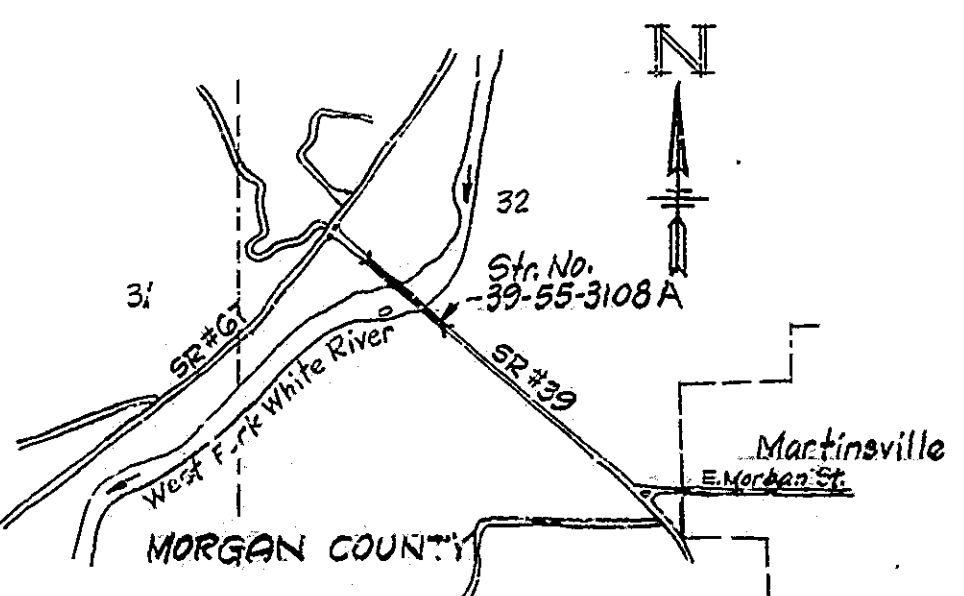
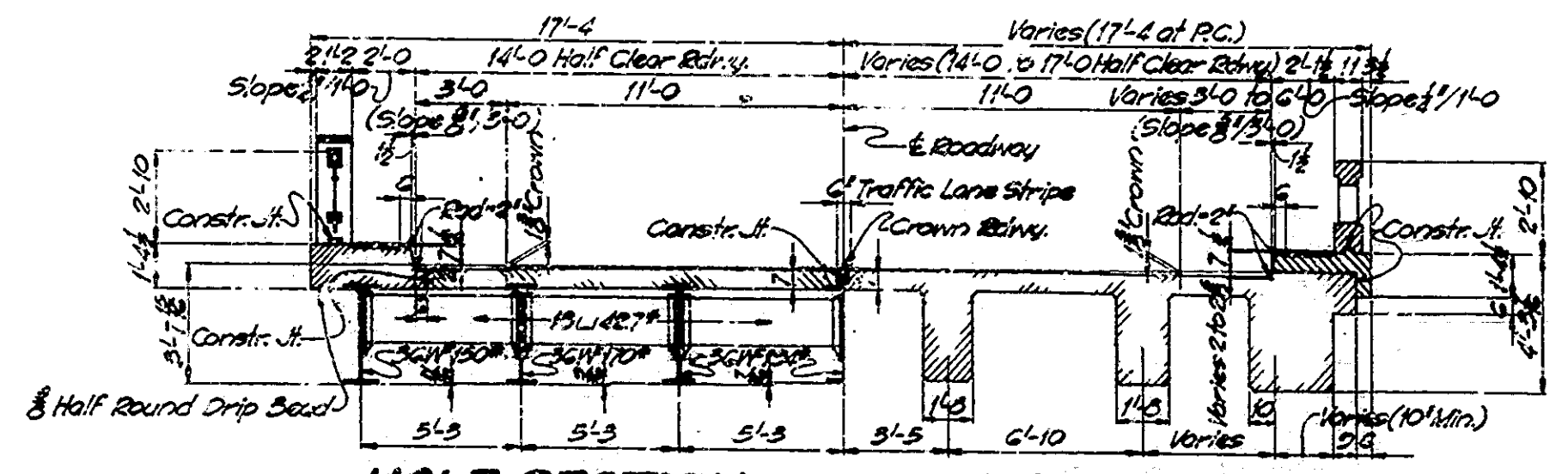


STANDARD DRAWINGS	
STANDARD	PURPOSE
Det. Sh. 1	Detour Signs
Det. Sh. 2	Barricades
Det. Sh. 3	Detour Signs
Det. Sh. 4	Detour Signs

Plans for this structure are on file in the Central Office as Bridge File 39-A-3108 and are available on request.

Where new work is to be fitted to old work the contractor shall check all dimensions and conditions in the field and report any errors or discrepancies to the Engineer or assume responsibility for their correctness and the fit of the new part to the old.

INDIANA STATE HIGHWAY COMMISSION
STANDARD SPECIFICATIONS DATED 1971
TO BE USED WITH THESE PLANS



TITLE SHEET AND GENERAL PLAN
DECK RECONSTRUCTION & OVERLAY
CONTINUOUS STEEL PLATE GIRDER,
STEEL BEAM & R.C. GIRDER BRIDGE
12 SPANS:- 40'-0", 2@65'-0", 100'-0", 4@130'-0", 100'-0", 2@65'-0", 40'-0"
2@2'-0" ROADWAY 2, 2'-0" WALKS
OVER WEST FORK OF WHITE RIVER ON STATE ROAD 39A
STATE HIGHWAY COMMISSION OF INDIANA
MORGAN COUNTY

Rev. 3-4-72 Sheet #18#2
Sheets 3, 4, 5 & 6 Deleted

APPROVED 6-27-1972
N.W. [Signature]
CHIEF HIGHWAY ENGINEER

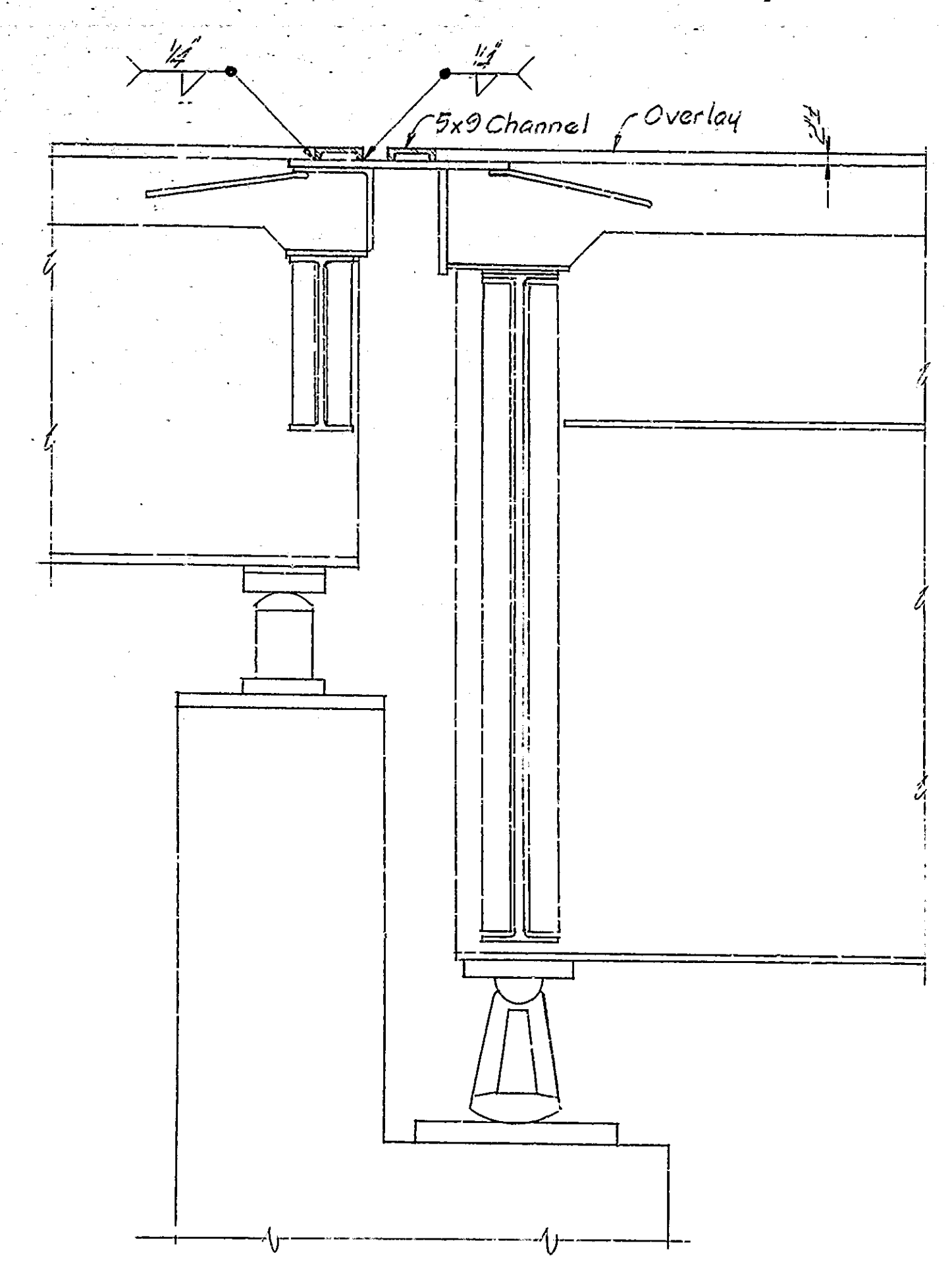
SCALE As Noted
RECOMMENDED FOR APPROVAL: J.H. [Signature]
JUNE 26, 1972

PROJECT: STATION: 11+25.00

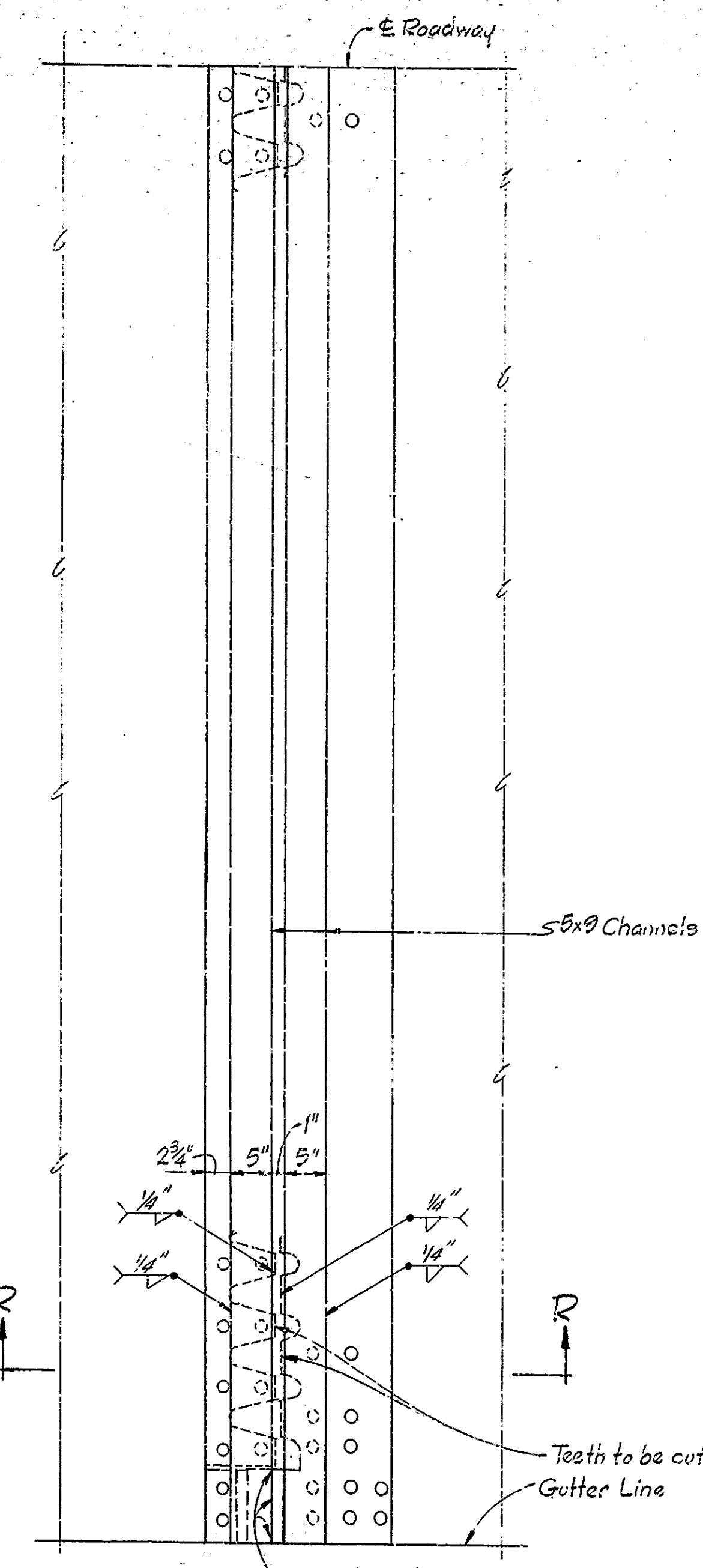
DRAWING: D1 OF 2
BRIDGE CONTRACT NO. B-0128

DESIGNED BY: [Signature]
DRAWN BY: [Signature]
CHECKED BY: [Signature]

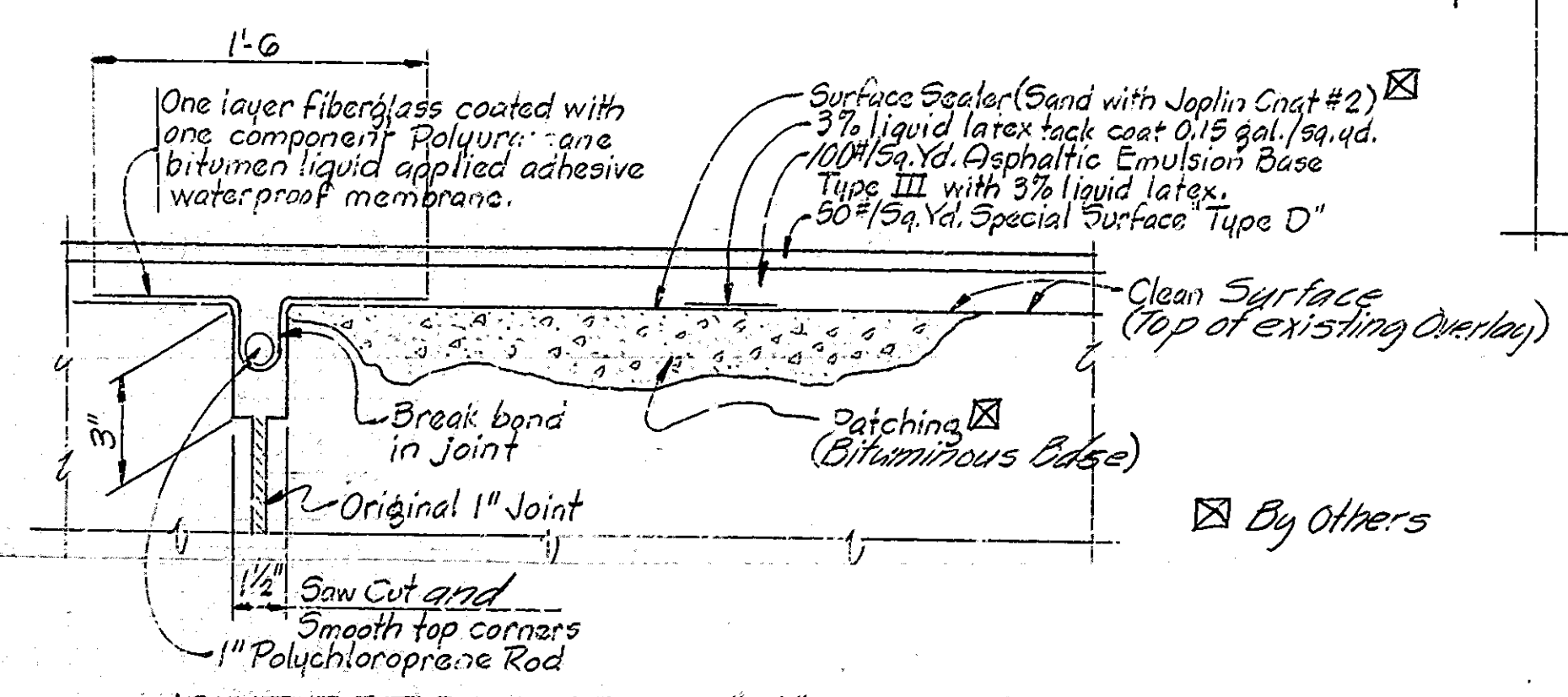
BRIDGES OVER 20' SPAN				
PIE. ROAD DIST. NO.	STATE	PROJECT NO.	FISCAL YEAR	TOTAL SHEETS
4	IND.		1972	2



SECTION R-R
Scale: 1"=1'-0"



HALF PLAN
Pier #4 or #10
Scale: 1"=1'-0"



JOINT DETAILS @ BENT #1 & #3, PIERS #2, #3, #11 & #12
TYPICAL SURFACE TREATMENT

Note: Cost of fiberglass, polychloroprene rod, waterproof membrane and joint sawing are all included in the cost of Joint Preparation.
Tack Coat is to be protected and repaired if required during application of base course.

CONSTRUCTION PROCEDURE

1. Close structure to traffic.
2. The existing loose overlay and patching will be removed by District Forces.
3. Clean entire bridge floor, curbs, walls, and inside face of concrete railing and apply a penetrating epoxy sealer.
4. Place Special Bituminous Base up to top of existing overlay in the areas to be patched. 5. Fit joints at Bents 1 and 3 and at Piers 2, 3, 11 & 12 saw cut as shown on plans to provide for joints.
6. Reconstruct toothed expansion joints as shown on details.
7. Prepare joints at bents 1 and 3 and piers 2, 3, 11 and 12 as shown on details and apply a 3% liquid latex tack coat to bridge floor and adjacent areas of approach pavement. Place 3% liquid base course and special sand mix surface course. Taper base course in 60 ft. length from end of bridge floor. Build 18" wide joint at outer ends of tapers at location of the existing 3 inch joints.

Note: The numbers do not necessarily indicate the sequence of operations.

Steps 1, 2, 3 & 4 are to be done by District Forces.

SUMMARY		
DESCRIPTION	UNIT	QUANTITY
Reconstructed Expansion Joint	Lin. Ft.	36
Joint Preparation	Lin. Ft.	108
Surface Sealing	Sq. Ft.	34,765
Special Tack Coat	Tons	2.2
Special Bituminous Base	Tons	186.0
Special Bituminous Surface	Tons	90.9
Special Bituminous Base (Hand Placed)	Tons	6.5
Pavement Removal	Sq. Yds.	1.7
Construction Signs Type "A"	Each	16
Construction Signs Type "B"	Each	8
Standard Barricades Type III	Each	4

DETAILS AND SUMMARY

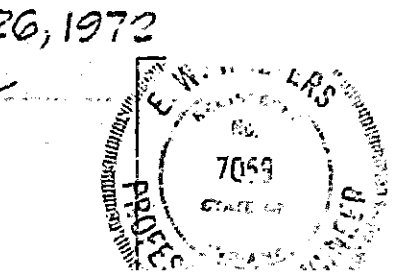
INDIANA STATE HIGHWAY COMMISSION

SCALE: As Noted DATE: JUNE 20, 1972

RECOMMENDED FOR APPROVAL: *E. W. Walter*

DRAWING: D2 OF 2

PROJECT: CONTRACT NO. B-5122



DESIGNED	C.K.D.
DRAWN	DBS 9/72
TRACED	C.K.D.

Rev. 2-4-72 Concrete Patching and Overlay